

# { preserved }

HOLLY HANSON

MAY 15 THROUGH AUGUST 01, 2026

EXHIBITION CATALOG

WATERSHED  
WATERSHED

{ preserved } HOLLY HANSON

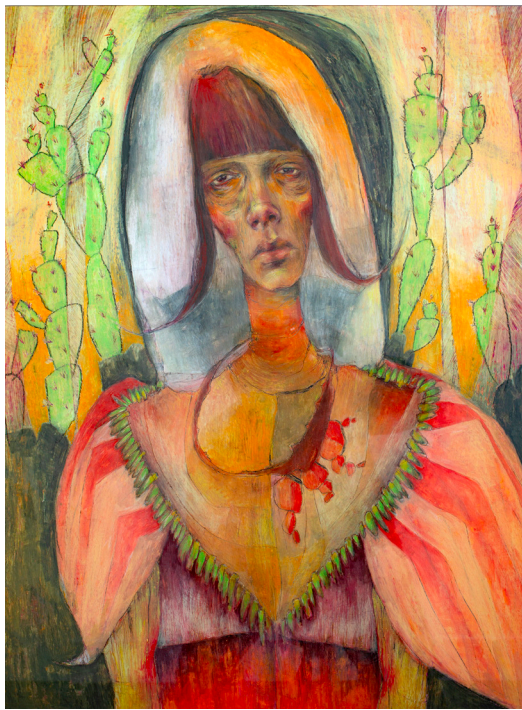


**Do You Wonder When They'll See?**

24" x 36"

Pastel, paint, thread, fabric, and buttons on linen

\$3200



**Ula**

22" x 30"

Pastel and pencil on paper

\$3400



**This Will Hold**

8" x 10"

Pastel and pencil on paper

\$525

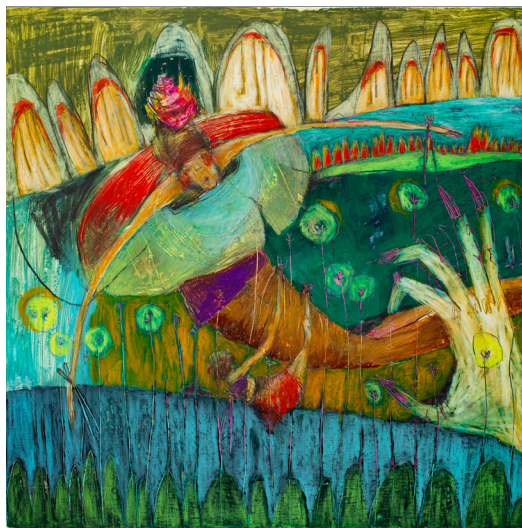


**Do You Have The Time?**

9" x 12"

Pastel and pencil on panel

\$600



**Floating**

10" x 10"

Pastel and pencil on panel

\$550



**For All, For One**

8" x 8"

Pastel, thread, fabric, and buttons on linen

\$550

MAY 15 THROUGH AUGUST 1, 2026



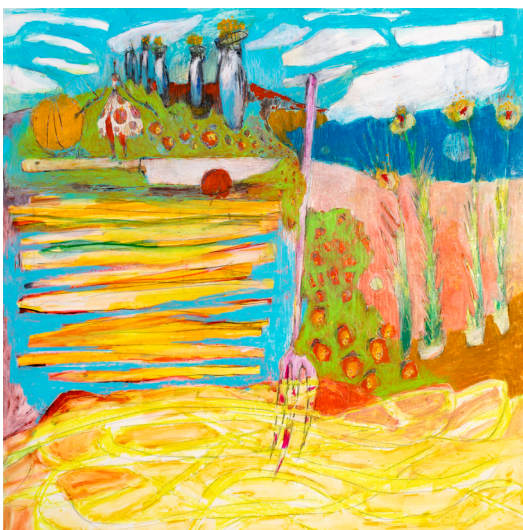
**In Play**  
24" x 36"  
Oil on panel  
\$3000



**What Grows Here**  
8" x 10"  
Pastel and pencil on paper  
\$525



**Among the Stalks and Stems**  
7.5" x 9.75"  
Pastel and pencil on handmade paper  
\$625



**The Jump**  
10" x 10"  
Pastel and pencil on panel  
\$550



**Despite**  
30" x 24"  
Pastel and pencil on paper  
\$3200

WATERCLIED  
WATERCLIED  
WATERSHED STUDIOWORKS